

green

design • architecture • landscape • travel



The Bathroom

Clean, creative concepts

Stealing Space

A laneway retreat

Craft and Materiality

Modernising a 1930s cottage

Aust \$12.95 Issue 61 NZ \$13.95

www.greenmagazine.com.au



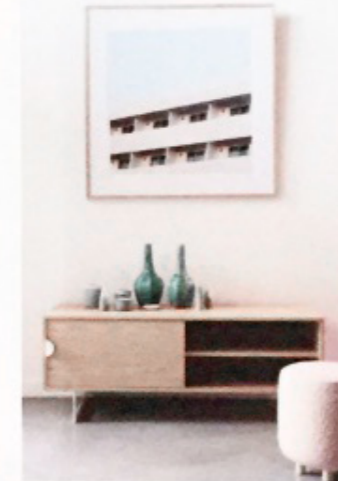
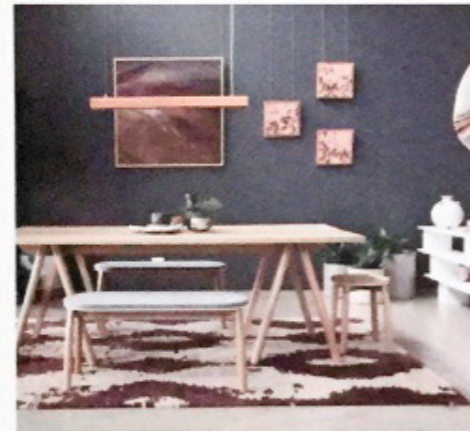
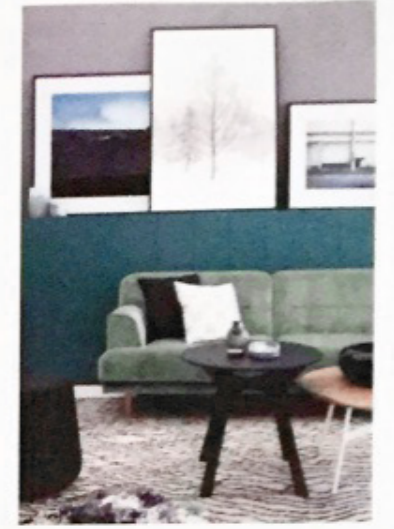
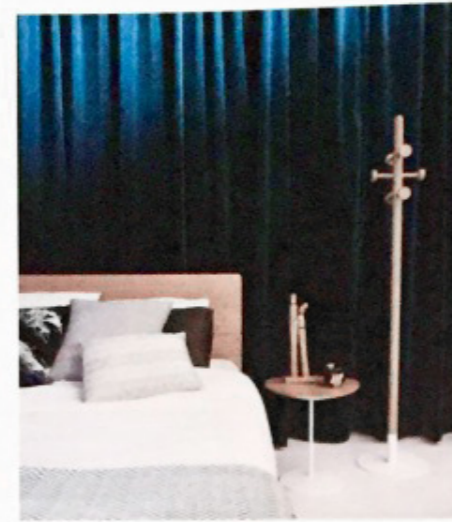
PLUS: Mangawhai Barn A rustic idyll • wukalina Trek on Country

Upfront

The Spirit of Collaboration

Over a dozen Melbourne design businesses came together over 23-25 March for The Design Co-Op: a showcase created by Anne-Claire Petre from anaca studio and Elizabeth Bull from One Fine Print. In addition to an insightful series of presentations, three guest interior designers were challenged to produce multiple living spaces that evoked the feeling of 'home' using products from The Design Co-Op suppliers. The bespoke three-day program championed Australian design and served to remind attendees of the importance of investing in pieces and products by local brands – a cause very close to our hearts.

thedesignco-op.com



Close to Home

Jack Flanagan's "Beraking table" harkens back to the designer's past as a rally driver. Inspired by the small, ball-bearing-like stones covering gravel roads in the south-west of Western Australia, Flanagan designed the coffee table to roll along the floor when pushed: it emulates the motion of the stones when driven on.

jackflanagan.com.au